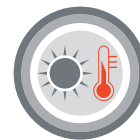


SILDUCT 2S



IT Tubo flessibile di colore rosso, realizzato in doppio strato di tessuto in fibra di vetro, spalmato di silicone; spirale incorporata in filo di acciaio armonico e doppio cordoncino esterno in fibra di vetro.

• Aspirazione e ventilazione industriale. Aspirazione di gas esausti e fumi di saldatura. Impiegato nelle industrie meccanica, automobilistica e della plastica.

EN Red flexible hose made of two plies of silicone coated glass fabric, with an embedded bronze plated steel wire helix. Double outer glass cord.

• Extraction of exhaust gas and welding fumes; industrial ventilation, automotive and plastic industries.

COD. P43

Ø mm 13-305



Doppio cordoncino in fibra di vetro
double outer glass cord

Spirale in acciaio galvanizzato
Galvanized steel spiral

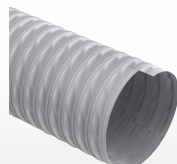
Doppio strato in tessuto di fibra di vetro spalmato di silicone
2 ply-silicone coated glass fabric



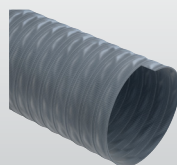
SCHEDA TECNICA · TECHNICAL DATA		CODICE	Ø INT.	PESO	DEPR	R. CURVATURA	LG. ROTOLO
		CODE	Ø INT.	WEIGHT	VACUUM	BENDING	COIL LGTH.
			mm	g/m	m H ₂ O	mm	m
		P435013000000*	13	160	6,53	15	4
		P435019000000*	19	190	6,53	15	4
		P435026000000*	26	220	6,53	15	4
		P435030000000*	30	250	6,53	15	4
		P435032000000*	32	260	6,53	16	4
		P435038000000*	38	310	6,02	18	4
		P435041000000*	41	320	6,02	19	4
		P435042000000*	42	320	6,02	19	4
		P435044000000*	44	340	5,61	21	4
		P435045000000*	45	340	5,61	21	4
		P435051000000*	51	360	5,20	24	4
		P435055000000*	55	420	4,89	27	4
		P435057000000*	57	430	4,89	28	4
		P435060000000*	60	470	4,79	31	4
		P435063000000*	63	490	4,79	31	4
		P435064000000*	64	490	4,79	31	4
		P435065000000*	65	500	4,79	31	4
		P435070000000*	70	530	4,38	35	4
		P435076000000*	76	580	4,28	38	4
		P435080000000*	80	620	4,18	40	4
		P435083000000*	83	640	4,08	42	4
		P435090000000*	90	690	3,98	44	4
		P435095000000*	95	730	3,67	48	4
		P435102000000*	102	770	3,47	52	4
		P435108000000*	108	830	3,06	55	4
		P435110000000*	110	850	2,96	57	4
		P435114000000*	114	890	2,86	57	4
		P435120000000*	120	940	2,86	61	4
		P435127000000*	127	1000	2,55	64	4
		P435130000000*	130	1020	2,35	65	4
		P435140000000*	140	1110	1,94	70	4
		P435152000000*	152	1200	1,73	75	4
		P435160000000*	160	1280	1,53	80	4
		P435165000000*	165	1320	1,43	83	4
		P435180000000*	180	1480	1,22	90	4
		P435203000000*	203	1650	0,92	101	4
		P435229000000*	229	1900	0,82	125	4
		P435254000000*	254	2140	0,71	150	4
		P435305000000*	305	2580	0,41	210	4

+250°C
picchi
peaks
+310°C
-70°C

ARTICOLI DELLA STESSA SERIE
ITEMS IN THE SAME SERIES



EOLO TERMORESISTENTE (cod. TR) p.46



EOLO HT 180°C (cod. H1) p.47

*Disponibile su richiesta, per quantitativi da concordare con l'ufficio vendite.

*Available on request, contact our sales office for more info and quantities.

I dati tecnici riportati sono stati misurati a 23°C e al 50% di umidità.

The technical data here reported have been measured at 23°C with 50% umidity.