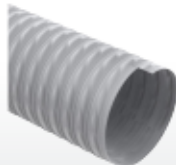
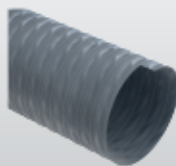


SCHEDA TECNICA · TECHNICAL DATA

**ARTICOLI DELLA STESSA SERIE
ITEMS IN THE SAME SERIES**

EOLO TERMORESISTENTE (cod. TR) p.46

EOLO HT 180°C (cod. H1) p.47

| CODICE | Ø INT. | PESO | DEPR | R. CURVATURA | LG. ROTOLO |
|-----------------|--------|--------|--------------------|--------------|------------|
| CODE | Ø INT. | WEIGHT | VACUUM | BENDING | COIL LGTH. |
| | mm | g/m | m H ₂ O | mm | m |
| P4350130000000* | 13 | 160 | 6,53 | 15 | 4 |
| P4350190000000* | 19 | 190 | 6,53 | 15 | 4 |
| P4350260000000* | 26 | 220 | 6,53 | 15 | 4 |
| P4350300000000* | 30 | 250 | 6,53 | 15 | 4 |
| P4350320000000* | 32 | 260 | 6,53 | 16 | 4 |
| P4350380000000* | 38 | 310 | 6,02 | 18 | 4 |
| P4350410000000* | 41 | 320 | 6,02 | 19 | 4 |
| P4350420000000* | 42 | 320 | 6,02 | 19 | 4 |
| P4350440000000* | 44 | 340 | 5,61 | 21 | 4 |
| P4350510000000* | 51 | 360 | 5,20 | 24 | 4 |
| P4350550000000* | 55 | 420 | 4,89 | 27 | 4 |
| P4350570000000* | 57 | 430 | 4,89 | 28 | 4 |
| P4350600000000* | 60 | 470 | 4,79 | 31 | 4 |
| P4350630000000* | 63 | 490 | 4,79 | 31 | 4 |
| P4350640000000* | 64 | 490 | 4,79 | 31 | 4 |
| P4350650000000* | 65 | 500 | 4,79 | 31 | 4 |
| P4350700000000* | 70 | 530 | 4,38 | 35 | 4 |
| P4350760000000* | 76 | 580 | 4,28 | 38 | 4 |
| P4350800000000* | 80 | 620 | 4,18 | 40 | 4 |
| P4350830000000* | 83 | 640 | 4,08 | 42 | 4 |
| P4350900000000* | 90 | 690 | 3,98 | 44 | 4 |
| P4350950000000* | 95 | 730 | 3,67 | 48 | 4 |
| P4351020000000* | 102 | 770 | 3,47 | 52 | 4 |
| P4351080000000* | 108 | 830 | 3,06 | 55 | 4 |
| P4351100000000* | 110 | 850 | 2,96 | 57 | 4 |
| P4351140000000* | 114 | 890 | 2,86 | 57 | 4 |
| P4351200000000* | 120 | 940 | 2,86 | 61 | 4 |
| P4351270000000* | 127 | 1000 | 2,55 | 64 | 4 |
| P4351300000000* | 130 | 1020 | 2,35 | 65 | 4 |
| P4351400000000* | 140 | 1110 | 1,94 | 70 | 4 |
| P4351520000000* | 152 | 1200 | 1,73 | 75 | 4 |
| P4351600000000* | 160 | 1280 | 1,53 | 80 | 4 |
| P4351650000000* | 165 | 1320 | 1,43 | 83 | 4 |
| P4351800000000* | 180 | 1480 | 1,22 | 90 | 4 |
| P4352030000000* | 203 | 1650 | 0,92 | 101 | 4 |
| P4352290000000* | 229 | 1900 | 0,82 | 125 | 4 |
| P4352540000000* | 254 | 2140 | 0,71 | 150 | 4 |
| P4353050000000* | 305 | 2580 | 0,41 | 210 | 4 |

*Disponibile su richiesta, per quantitativi da concordare con l'ufficio vendite.

*Available on request, contact our sales office for more info and quantities.

I dati tecnici riportati sono stati misurati a 23°C e al 50% di umidità.

The technical data here reported have been measured at 23°C with 50% humidity.