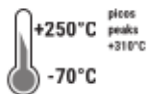
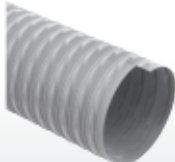
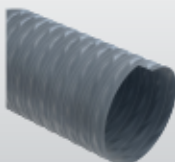


FICHA TÉCNICA · TECHNICAL DATA

**ARTÍCULOS DE LA MISMA SERIE
ITEMS IN THE SAME SERIES**

EOLO TERMORESISTENTE (cód. TR) p.46

EOLO HT 180°C (cód. H1) p.47

CÓDIGO	Ø INT.	PESO	VACIO	R. CURVATURA	LG. ROLLO
CODE	Ø INT.	WEIGHT	VACUUM	BENDING	COIL LGTH.
	mm	g/m	m H ₂ O	mm	m
P4350130000000*	13	160	6,53	15	4
P4350190000000*	19	190	6,53	15	4
P4350260000000*	26	220	6,53	15	4
P4350300000000*	30	250	6,53	15	4
P4350320000000*	32	260	6,53	16	4
P4350380000000*	38	310	6,02	18	4
P4350410000000*	41	320	6,02	19	4
P4350420000000*	42	320	6,02	19	4
P4350440000000*	44	340	5,61	21	4
P4350510000000*	51	360	5,20	24	4
P4350550000000*	55	420	4,89	27	4
P4350570000000*	57	430	4,89	28	4
P4350600000000*	60	470	4,79	31	4
P4350630000000*	63	490	4,79	31	4
P4350640000000*	64	490	4,79	31	4
P4350650000000*	65	500	4,79	31	4
P4350700000000*	70	530	4,38	35	4
P4350760000000*	76	580	4,28	38	4
P4350800000000*	80	620	4,18	40	4
P4350830000000*	83	640	4,08	42	4
P4350900000000*	90	690	3,98	44	4
P4350950000000*	95	730	3,67	48	4
P4351020000000*	102	770	3,47	52	4
P4351080000000*	108	830	3,06	55	4
P4351100000000*	110	850	2,96	57	4
P4351140000000*	114	890	2,86	57	4
P4351200000000*	120	940	2,86	61	4
P4351270000000*	127	1000	2,55	64	4
P4351300000000*	130	1020	2,35	65	4
P4351400000000*	140	1110	1,94	70	4
P4351520000000*	152	1200	1,73	75	4
P4351600000000*	160	1280	1,53	80	4
P4351650000000*	165	1320	1,43	83	4
P4351800000000*	180	1480	1,22	90	4
P4352030000000*	203	1650	0,92	101	4
P4352290000000*	229	1900	0,82	125	4
P4352540000000*	254	2140	0,71	150	4
P4353050000000*	305	2580	0,41	210	4

*Disponible bajo pedido, para cantidades a convenir con el departamento de ventas.

*Available on request, contact our sales office for more info and quantities.

Los datos técnicos indicados se midieron a 23°C y 50% de humedad.

The technical data here reported have been measured at 23°C with 50% humidity.