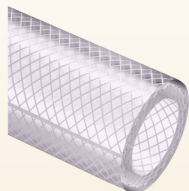


FICHA TÉCNICA · TECHNICAL DATA

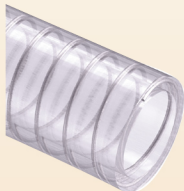

en stock
available on stock



CLAMP BS 4825 p.123

**ARTÍCULOS DE LA MISMA SERIE
ITEMS IN THE SAME SERIES**


ARIANNA BIO (cód. B1) p.102



PLUTONE BIO (cód. B2) p.100

| CÓDIGO | Ø INT. | Ø EST. | PESO | P.T. | P.R. | VACIO | R. CURVATURA | LG. ROLLO | VOLUME |
|-----------------|--------|--------|--------|------|------|--------------------|--------------|------------|----------------|
| CODE | Ø INT. | Ø OUT. | WEIGHT | W.P. | B.P. | VACUUM | BENDING | COIL LGTH. | VOLUME |
| | mm | mm | g/m | bar | bar | m H ₂ O | mm | m | m ₃ |
| B3010100018000* | 10 | 18 | 245 | 22 | 66 | 10 | 30 | 60 | 0,033 |
| B3010120020000* | 12 | 20 | 280 | 19 | 57 | 10 | 36 | 60 | 0,039 |
| B3010140022000* | 14 | 22 | 315 | 19 | 57 | 10 | 42 | 60 | 0,048 |
| B3010160025000* | 16 | 25 | 395 | 18 | 54 | 10 | 48 | 60 | 0,061 |
| B3010180027000* | 18 | 27 | 435 | 16 | 48 | 10 | 54 | 60 | 0,091 |
| B3010200029000 | 20 | 29 | 475 | 14 | 42 | 10 | 60 | 60 | 0,106 |
| B3010220031000* | 22 | 31 | 510 | 14 | 42 | 10 | 66 | 60 | 0,111 |
| B3010250035000 | 25 | 35 | 655 | 12 | 36 | 10 | 75 | 60 | 0,146 |
| B3010300040000 | 30 | 40 | 765 | 12 | 36 | 9 | 90 | 60 | 0,184 |
| B3010320043000 | 32 | 43 | 890 | 11 | 33 | 9 | 96 | 60 | 0,214 |
| B3010350046000 | 35 | 46 | 960 | 10 | 30 | 9 | 105 | 60 | 0,225 |
| B3010380049000 | 38 | 49 | 1030 | 10 | 30 | 9 | 110 | 30 | 0,198 |
| B3010400051000 | 40 | 51 | 1080 | 10 | 30 | 9 | 120 | 30 | 0,202 |
| B3010450058000 | 45 | 58 | 1505 | 9 | 27 | 8 | 140 | 30 | 0,241 |
| B3010500063000 | 50 | 63 | 1650 | 8 | 24 | 8 | 150 | 30 | 0,286 |
| B3010600074000* | 60 | 74 | 2080 | 7 | 21 | 8 | 180 | 30 | 0,365 |
| B3010630077000 | 63 | 77 | 2175 | 7 | 21 | 8 | 190 | 30 | 0,379 |
| B3010700085000* | 70 | 85 | 2525 | 6 | 18 | 7 | 210 | 30 | 0,469 |
| B3010760091000 | 76 | 90,8 | 2685 | 6 | 18 | 7 | 230 | 30 | 0,603 |
| B3010800095000* | 80 | 94,85 | 2790 | 6 | 18 | 7 | 240 | 20 | 0,498 |
| B3010900106000* | 90 | 106 | 3435 | 5 | 15 | 7 | 270 | 20 | 0,760 |
| B3011020118000* | 102 | 118 | 3850 | 5 | 15 | 7 | 310 | 20 | 0,801 |

*Disponible bajo pedido, para cantidades a convenir con el departamento de ventas.

*Available on request, contact our sales office for more info and quantities.

Los datos técnicos indicados se midieron a 23°C y 50% de humedad.

The technical data here reported have been measured at 23°C with 50% umidity.