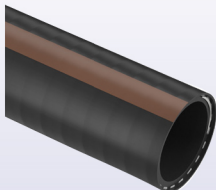


SCHEDA TECNICA · TECHNICAL DATA

 disponibile a magazzino
available on stock

**ARTICOLI DELLA STESSA SERIE
 ITEMS IN THE SAME SERIES**

PLUTONE PO (cod. PH) p.63

| CODICE | Ø INT. | Ø EST. | PESO | P.E. | P.S. | DEPR. | R. CURVATURA | LG. ROTOLO | VOLUME |
|-----------------|--------|--------|--------|------|------|--------------------|--------------|------------|----------------|
| CODE | Ø INT. | Ø OUT. | WEIGHT | W.P. | B.P. | VACUUM | BENDING R. | COIL LGTH. | VOLUME |
| | mm | mm | g/m | bar | bar | m H ₂ O | mm | m | m ³ |
| PK010200029000 | 20 | 29 | 390 | 14 | 42 | 10 | 80 | 60 | 0,106 |
| PK010250035000 | 25 | 35 | 540 | 13 | 39 | 10 | 100 | 60 | 0,146 |
| PK010300040000* | 30 | 40 | 630 | 13 | 39 | 9 | 120 | 60 | 0,184 |
| PK010320043000 | 32 | 43 | 730 | 12 | 36 | 9 | 130 | 60 | 0,214 |
| PK010380049000 | 38 | 49 | 850 | 12 | 36 | 9 | 150 | 30 | 0,198 |
| PK010400051000* | 40 | 51 | 885 | 11 | 33 | 9 | 160 | 30 | 0,202 |
| PK010450058000* | 45 | 58 | 1280 | 15 | 45 | 8 | 230 | 30 | 0,241 |
| PK010500063000 | 50 | 63 | 1400 | 13 | 39 | 8 | 250 | 30 | 0,286 |
| PK010520065000* | 52 | 65 | 1450 | 13 | 39 | 8 | 260 | 30 | 0,291 |
| PK010600074000* | 60 | 74 | 1755 | 12 | 36 | 8 | 300 | 30 | 0,365 |
| PK010630077000* | 63 | 77 | 1835 | 11 | 33 | 8 | 320 | 30 | 0,379 |
| PK010700085000* | 70 | 85 | 2110 | 10 | 30 | 7 | 350 | 30 | 0,469 |
| PK010760091000* | 76 | 91 | 2275 | 10 | 30 | 7 | 380 | 30 | 0,604 |
| PK010800095000* | 80 | 95 | 2345 | 9 | 27 | 7 | 400 | 20 | 0,498 |
| PK010900106000* | 90 | 106 | 2865 | 9 | 27 | 7 | 450 | 20 | 0,760 |
| PK011020118000* | 102 | 118 | 3210 | 8 | 24 | 7 | 510 | 20 | 0,801 |

*Disponibile su richiesta, per quantitativi da concordare con l'ufficio vendite.

*Available on request, contact our sales office for more info and quantities.

I dati tecnici riportati sono stati misurati a 23°C e al 50% di umidità.

The technical data here reported have been measured at 23°C with 50% humidity.