

PLUTONE PK



ES Tubo de goma termoplástica TPV de color verde, con una tira identificativa blanca, reforzado con espiral de acero armónico y con revestimiento téxtil. Superficie interna y cobertura externa lisas para reducir la fricción y el posible acúmulo de residuos. Estudiado para la industria química. Muy resistente a los agentes atmosféricos, al ozono, al envejecimiento y a numerosas substancias químicas. Conductivo ($R < 10^2$ Ohm/m) conectando la espiral a tierra.

• Industria química : aspiración y transporte de ácidos, álcalis y substancias químicas

EN White/beige TPV inline, reinforced with steel spiral and polyester yarn. Green TPV cover with longitudinal white stripe. Linner and cover are smooth, to reduce friction and dirt collection while using it. Robust hose dedicated to the chemical industry, suitable for suction and delivery. It can be conductive ($R < 10^2$ Ohm/m) by grounding the spiral.

• Good resistance to ageing, weathering and ozone. Suction and delivery of acids, alkali and chemicals of various kind.

CÓD. PK
Ø mm 20-102



Tubo en TPV
TPV hose

Refuerzo textil de fibra de poliéster
Polyester yarn reinforcement

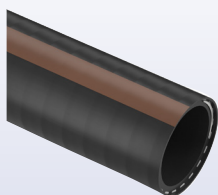
Espiral de acero
Steel spiral



| FICHA TÉCNICA · TECHNICAL DATA | CÓDIGO | Ø INT. | Ø EST. | PESO | P.T. | P.R. | VACIO | R. CURVATURA | LG. ROLLO | VOLUME |
|--------------------------------|-----------------|--------|--------|--------|------|------|--------------------|--------------|------------|----------------|
| | CODE | Ø INT. | Ø OUT. | WEIGHT | W.P. | B.P. | VACUUM | BENDING R. | COIL LGTH. | VOLUME |
| | | mm | mm | g/m | bar | bar | m H ₂ O | mm | m | m ³ |
| | PK010200029000 | 20 | 29 | 390 | 14 | 42 | 10 | 80 | 60 | 0,106 |
| | PK010250035000 | 25 | 35 | 540 | 13 | 39 | 10 | 100 | 60 | 0,146 |
| | PK010300040000* | 30 | 40 | 630 | 13 | 39 | 9 | 120 | 60 | 0,184 |
| | PK010320043000 | 32 | 43 | 730 | 12 | 36 | 9 | 130 | 60 | 0,214 |
| | PK010380049000 | 38 | 49 | 850 | 12 | 36 | 9 | 150 | 30 | 0,198 |
| | PK010400051000* | 40 | 51 | 885 | 11 | 33 | 9 | 160 | 30 | 0,202 |
| | PK010450058000* | 45 | 58 | 1280 | 15 | 45 | 8 | 230 | 30 | 0,241 |
| | PK010500063000 | 50 | 63 | 1400 | 13 | 39 | 8 | 250 | 30 | 0,286 |
| | PK010520065000* | 52 | 65 | 1450 | 13 | 39 | 8 | 260 | 30 | 0,291 |
| | PK010600074000* | 60 | 74 | 1755 | 12 | 36 | 8 | 300 | 30 | 0,365 |
| | PK010630077000* | 63 | 77 | 1835 | 11 | 33 | 8 | 320 | 30 | 0,379 |
| | PK010700085000* | 70 | 85 | 2110 | 10 | 30 | 7 | 350 | 30 | 0,469 |
| | PK010760091000* | 76 | 91 | 2275 | 10 | 30 | 7 | 380 | 30 | 0,604 |
| | PK010800095000* | 80 | 95 | 2345 | 9 | 27 | 7 | 400 | 20 | 0,498 |
| | PK010900106000* | 90 | 106 | 2865 | 9 | 27 | 7 | 450 | 20 | 0,760 |
| | PK011020118000* | 102 | 118 | 3210 | 8 | 24 | 7 | 510 | 20 | 0,801 |



ARTÍCULOS DE LA MISMA SERIE
ITEMS IN THE SAME SERIES



PLUTONE PO (cód. PH) p.63

*Disponible bajo pedido, para cantidades a convenir con el departamento de ventas.

*Available on request, contact our sales office for more info and quantities.

Los datos técnicos indicados se midieron a 23°C y 50% de humedad.

The technical data here reported have been measured at 23°C with 50% umidity.