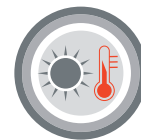


EOLO HT 180°C



IT Tubo flessibile di colore grigio scuro, realizzato con tessuto di poliestere spalmato in TPU autoestinguente e spirale di rinforzo in acciaio incorporata fra i due strati. Il materiale

impiegato è autoestinguente V(TM)-0 secondo UL94, grado M1 secondo NFP 92-503 e grado FAR25-853-a secondo NF EN 2310. Esente silicone, plastificanti e ftalati.

• Ventilazione industriale, aspirazione di gas, fumi, vapori, fumi saldatura, impiegato nell'industria meccanica, automobilistica, plastica e nella cantieristica navale.

EN Grey duct made with flame resistant TPU coated polyester fabric and reinforced by steel spiral welded between the two layers. The material is flame retardant V(TM)-0 according to UL 94, grade M1 according to NF P 92-503 and in compliance with NF EN 2310, grade FAR25-853-a. SILICON FREE, it is also free from phthalates and softeners.

• Civil and naval conditioning plants, ventilation systems, suction of fumes, vapours, powders, gas.

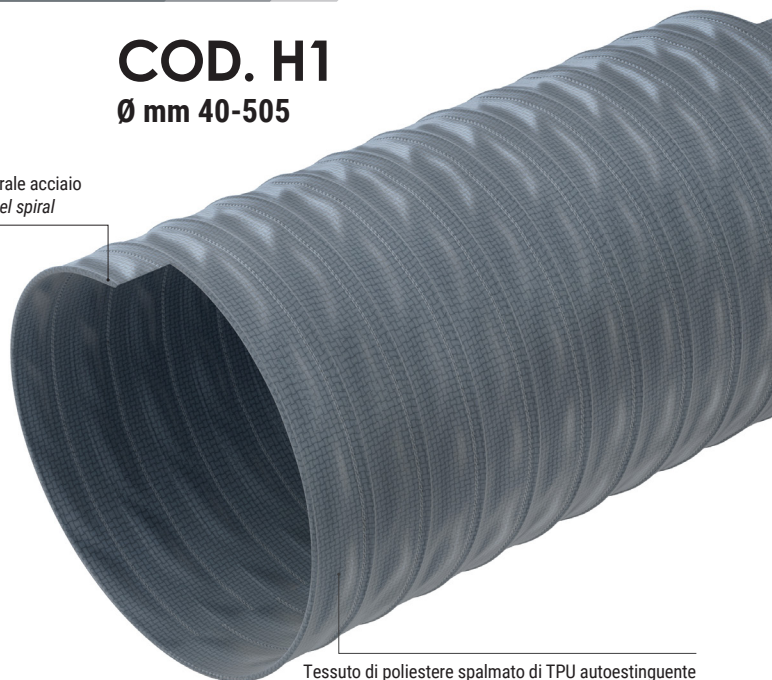
• Civil and naval conditioning plants, ventilation systems, suction of fumes, vapours, powders, gas.



COD. H1

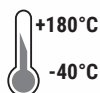
Ø mm 40-505

Spirale acciaio
Steel spiral



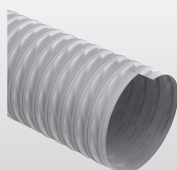
Tessuto di poliestere spalmato di TPU autoestinguente
Flame resistant TPU coated polyester fabric

SCHEDA TECNICA - TECHNICAL DATA

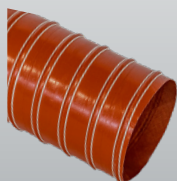


F2 W2 p.122
Fascetta doppioponte W2 / Double bridge W2

ARTICOLI DELLA STESSA SERIE ITEMS IN THE SAME SERIES



EOLO TERMORESISTENTE (cod. TR) p.46



SILDUCT 2S (cod. P43) p.52

CODICE CODE	Ø INT. Ø INT.	PESO WEIGHT	R. CURVATURA BENDING	LG. ROTOLO COIL LGTH.	VOL. VOL.
	mm	g/m	mm	m	m ³
H101040000000*	40	125	20	10	0,002
H101045000000*	45	140	23	10	0,002
H101051000000*	51	150	26	10	0,003
H101055000000*	55	165	28	10	0,003
H101060000000*	60	175	30	10	0,004
H101063000000*	63	185	32	10	0,004
H101065000000*	65	190	33	10	0,005
H101070000000*	70	185	35	10	0,005
H101076000000*	76	200	38	10	0,006
H101080000000*	80	210	40	10	0,007
H101082000000*	82	215	41	10	0,007
H101090000000*	90	240	45	10	0,009
H101102000000*	102	310	51	10	0,011
H101107000000*	107	325	54	10	0,012
H101110000000*	110	330	55	10	0,013
H101115000000*	115	345	58	10	0,014
H101120000000*	120	360	60	10	0,015
H101127000000*	127	385	64	10	0,017
H101130000000*	130	390	65	10	0,018
H101140000000*	140	420	70	10	0,021
H101152000000*	152	460	76	10	0,024
H101160000000*	160	470	80	10	0,027
H101163000000*	163	475	82	10	0,028
H101180000000*	180	525	90	10	0,034
H101203000000*	203	595	102	10	0,043
H101220000000*	220	640	110	10	0,050
H101228000000*	228	665	114	10	0,054
H101254000000*	254	910	127	10	0,067
H101279000000*	279	1000	140	10	0,080
H101305000000*	305	1095	153	10	0,124
H101315000000*	315	1130	158	10	0,102
H101330000000*	330	1180	165	10	0,112
H101356000000*	356	1275	178	10	0,130
H101406000000*	406	1455	203	10	0,236
H101500000000*	500	2015	250	10	0,357
H101505000000*	505	2035	253	10	0,364

*Disponibile su richiesta, per quantitativi da concordare con l'ufficio vendite.

*Available on request, contact our sales office for more info and quantities.

I dati tecnici riportati sono stati misurati a 23°C e al 50% di umidità.

The technical data here reported have been measured at 23°C with 50% humidity.