

# SCHEDA TECNICA - TECHNICAL DATA

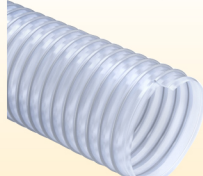


**+90°C** picchi peaks  
+125°C  
**-40°C**

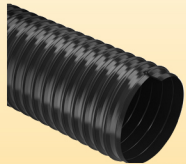


**F2 W2 p.122**  
Fascetta doppioponte W2 / Double bridge W2

## ARTICOLI DELLA STESSA SERIE ITEMS IN THE SAME SERIES



**VULCANO 15 ET (cod. VI) p.89**



**VULCANO 15 EL (cod. EC) p.24**

CODICE	Ø INT.	SPESS. MIN.	PESO	DEPR.	R. CURVATURA	LG. ROLOTO	VOL.	FASCETTA DOPPIOPONTE W2
CODE	Ø INT.	MIN WALL TH.	WEIGHT	VACUUM	BENDING	COIL LGTH.	VOL.	DOUBLE BRIDGE W2
	mm/inch	mm	g/m	m H <sub>2</sub> O	mm	m	m <sup>3</sup>	
VC010200000000*	20	1,5	245	9,5	25	20	0,031	-
VC010250000000*	25	1,5	305	9,5	30	20	0,048	-
VC010300000000*	30	1,5	440	9,5	35	20	0,056	-
VC010320000000*	32	1,5	465	9,5	35	20	0,059	-
VC010350000000*	35	1,5	500	9,5	40	20	0,063	-
VC010380000000	38	1,5	535	9,5	40	20	0,091	-
VC010400000000	40	1,5	560	9,5	50	20	0,095	-
VC010450000000*	45	1,5	620	9	50	20	0,104	-
VC010500000000	50	1,5	685	9	60	20	0,114	-
VC010510000000	51	1,5	695	9	60	20	0,116	-
VC010550000000*	55	1,5	745	9	65	20	0,124	-
VC010600000000	60	1,5	810	8,5	70	20	0,133	-
VC010630000000	63	1,5	845	8	70	20	0,185	-
VC010650000000*	65	1,5	870	7,5	70	20	0,190	-
VC010700000000	70	1,5	1005	7,5	80	20	0,205	-
VC010750000000*	75	1,5	1075	7	80	20	0,218	-
VC010760000000	76	1,5	1090	7	90	20	0,248	-
VC010800000000	80	1,5	1140	6	90	20	0,259	F2 W2 076.0 090.0
VC010900000000	90	1,5	1275	5	100	20	0,288	-
VC011000000000*	100	1,5	1410	4	120	15	0,317	-
VC011020000000	102	1,5	1435	3,5	120	15	0,323	-
VC011100000000	110	1,5	1545	3,2	130	15	0,346	-
VC011150000000*	115	1,5	1610	3	135	15	0,360	F2 W2 100.0 127.0
VC011200000000	120	1,5	1675	3	140	15	0,374	-
VC011220000000*	122	1,5	1705	3	140	15	0,380	-
VC011270000000	127	1,5	2075	2,9	150	15	0,397	-
VC011300000000*	130	1,5	2120	2,6	150	15	0,608	-
VC011400000000*	140	1,5	2275	2,4	160	15	0,651	-
VC011500000000	150	1,5	2435	2	170	15	0,695	-
VC011520000000	152	1,5	2465	2	170	15	0,703	F2 W2 130.0 190.0
VC011600000000	160	1,5	2590	1,8	180	15	0,738	-
VC011750000000*	175	1,5	2705	1,5	200	15	0,954	-
VC011800000000	180	1,5	2780	1,5	210	15	0,980	-
VC012000000000	200	1,5	3080	1,2	230	15	1,082	-
VC012030000000	203	1,5	3125	1,2	230	15	1,098	-
VC012060000000*	206	1,5	3170	1,2	235	15	1,113	F2 W2 200.0 230.0
VC012200000000*	220	1,5	3380	1	260	10	1,185	-
VC012280000000*	228	1,5	3500	1	260	10	1,226	-
VC012500000000*	250	1,5	3830	0,8	290	10	1,338	-
VC012540000000*	254	1,5	3890	0,8	290	10	1,359	-
VC012650000000*	265	1,5	4055	0,7	300	10	1,415	-
VC012790000000*	279	1,5	4265	0,7	320	10	1,487	F2 W2 250.0 330.0
VC013050000000*	305	1,5	5680	0,7	350	10 m pz. dritti/ straight	1,007	-
VC013200000000*	320	1,5	5955	0,7	-	10 m pz. dritti/ straight	1,105	-
VC013500000000*	350	1,5	6500	0,7	-	10 m pz. dritti/ straight	1,313	-
VC014000000000*	400	1,5	7415	0,7	-	6 m pz. dritti/ straight	1,020	F2 W2 350.0 410.0
VC014060000000*	406	1,5	7525	0,7	-	6 m pz. dritti/ straight	1,050	-
VC014500000000*	450	1,5	8325	0,3	-	6 m pz. dritti/ straight	1,283	-
VC015000000000*	500	1,5	9240	0,2	600	5 m pz. dritti/ straight	1,313	-

\*Disponibile su richiesta, per quantitativi da concordare con l'ufficio vendite.

\*Available on request, contact our sales office for more info and quantities.

I dati tecnici riportati sono stati misurati a 23°C e al 50% di umidità.

The technical data here reported have been measured at 23°C with 50% humidity.